

# Smoke Detector, i4H-SM-3S/SH-3SH

## INTRODUCTION

i4H-SM-3S/SH-3SH smoke detector is designed to sense smoke that comes into the detector chamber, and to give early warning of developing fires by activating i4H-LS-20 alarm system, and its built-in siren as well.

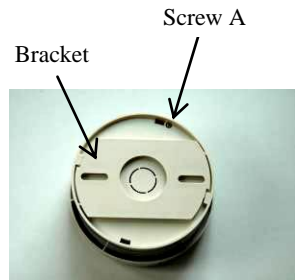


Fig. 1

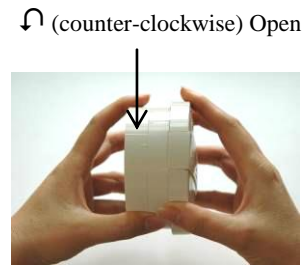


Fig. 2

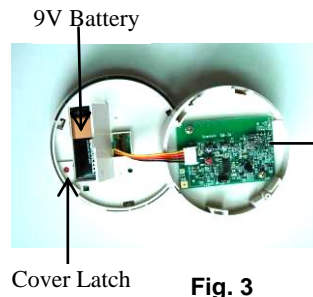


Fig. 3

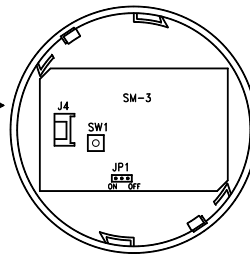


Fig. 4

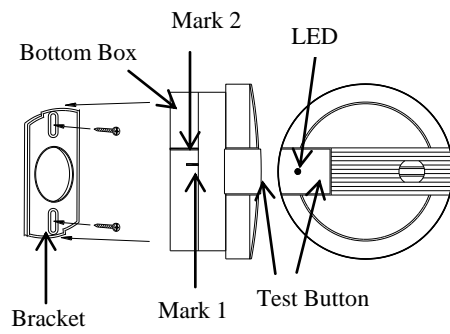


Fig. 5

## INSTALLATION

1. Refer to Fig. 1, loosen the Screw A on the bottom box by about 5 turns counter-clockwise
2. Refer to Fig. 2 & Fig. 3, detach the bottom box of the smoke detector.
3. Refer to Fig. 3, open the cover of the battery compartment, connect supplied 9V battery and then close the cover.
4. Re-assemble the bottom box with the main body. The marks should be at the position shown in Fig. 5 after combination. And then tighten the Screw A.
5. Keep pressing the Clear/Enroll Button on i4H-LS-20 for over 3 seconds and then release it, the i4H-LS-20 would keep beeping and all LEDs blink. This means the system is ready for enrolling device.
6. Within 30 seconds press the TEST button of the i4H-SM-3S for 2 seconds. If you hear 3 short beeps from the i4H-LS-20 soon later then enrolling successes, otherwise you will hear one long beep after 30 seconds that means enrolling fails, you have to repeat enrolling action.

Note: Avoid activating any other sensors during the 30 seconds Device Enroll period.

Remarks: In case you have to change the device's attribute, please do it on the cloud web directly, or refer to HyperSecureLink software user guide to change it by computer.

7. Locate the smoke detector properly, and fixed the bracket with the two supplied screws on the ceiling. And then mount the smoke detector on the bracket.

**Note: Keep the smoke detector within effective radio range away from the base unit.**

8. Press the "TEST" button, and check if the base unit is activated.

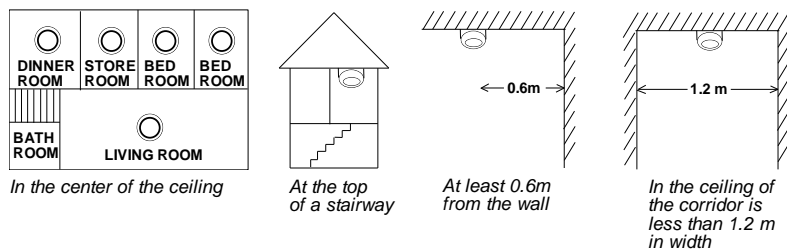
**Note: 1) The LED starts flashing after a few seconds when smoke is detected, then the internal buzzer sounds and activates the base unit it after 10 seconds.**

**2) The LED flashes every 43 seconds to indicate the detector is in standby mode, and it beeps periodically if 9V battery goes too low. Replace the battery when these beeps occur.**

**3) Maintenance at least once a year is essential. Open the cover then clean the sensing chamber with vacuum cleaner carefully.**

**4) SM-3S comes with cover latches that prevent the cover from closing if no battery is installed.**

## PREFERRED LOCATION



## LOCATIONS TO BE AVOIDED

### Do NOT locate detector in:

- The Kitchen: Smoke from cooking might cause an unwanted alarm.
- Near Ventilating fan, Fluorescent lamp or Air-Conditioning equipment: Air drafts from them may affect the sensitivity of the detector.
- Near Ceiling beams or over Cabinet: Stagnant air in this area may affect the sensitivity of the detector.
- In the peak of an 'A' frame type of ceiling.

## SPECIFICATIONS:

**Detection:** Photo-electric Chamber

Thermistor for heat, alarm level: above 57+/- 3°C (Only for i4H-SM-3SH)

Either of smoke or heat alarm would trigger the detector

**Power:** 9V Battery

**Supervision:** Sends heartbeat signal at 60-minute intervals. When Tamper or Low -Battery condition is detected, it reports automatically.

**Current Consumption:** 10uA@ standby, 16mA@ activation

**Battery Life:** About 1~1.5 years

**Working Temperature:** 0°C ~ 50°C

**Ambient Relative Humidity:** 10% ~ 85%

**Alarm Sound Level:** 85dB@3m

**Indicator Light:** LED flashes every 32 seconds approximately.

**Low Battery:** Beep every 32 seconds approximately.

**Actuation Indicator:** LED ON, Buzzer ON

**Size:** φ101mm x H 52mm

**Weight:** About 126g (w/o battery)

