



Wi-Fi Adaptor Settings

Location of the Smart Box

Since the wifi Adaptor needs to communicate with your wifi router,
Please locate the Smart Box near your wifi router to keep good signal quality.

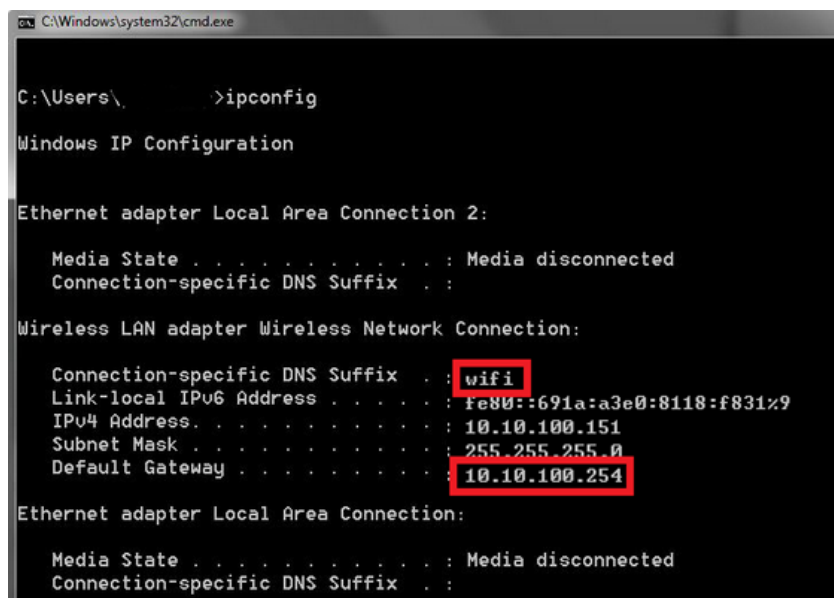
1, Search all the wifi networks in your environment from PC, tablet or mobile phone. You will find a network SSID as ” **lifesosxxxx**”.

Connect to this wifi network by the Password of “**12345678**”.

Note: wifi Adaptor only can be connected to one browser, if you can see the SSID but can't connect to it then check if it has been connected to other device.

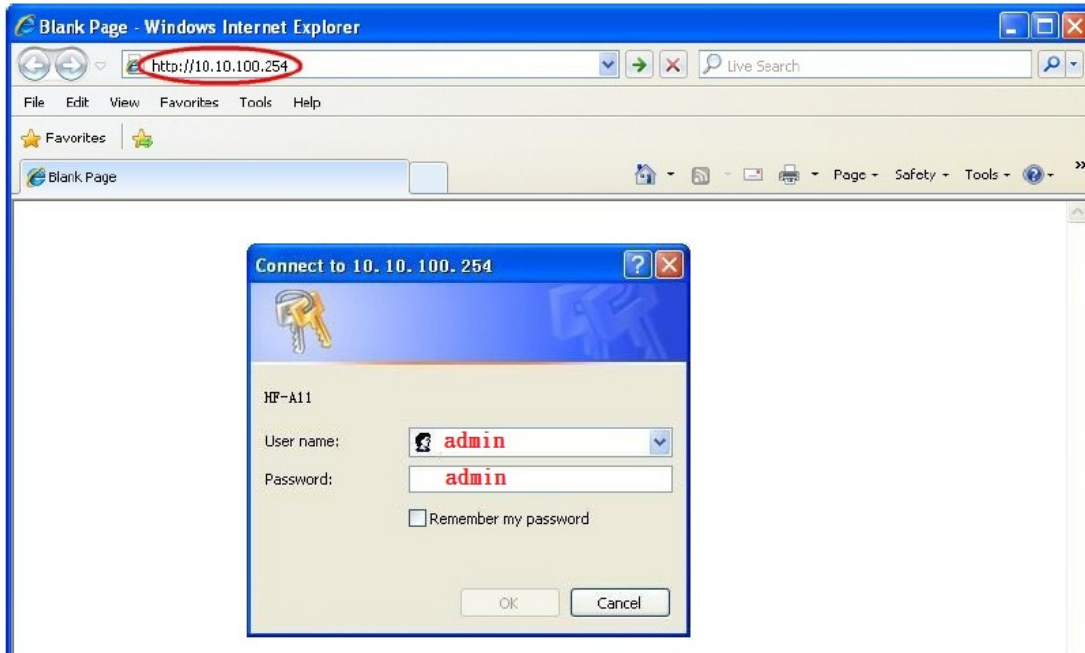


2, You can run the command prompt “cmd.exe” on your PC and enter “ipconfig” to find the Gateway address of the wifi Adaptor is “10.10.100.254”.



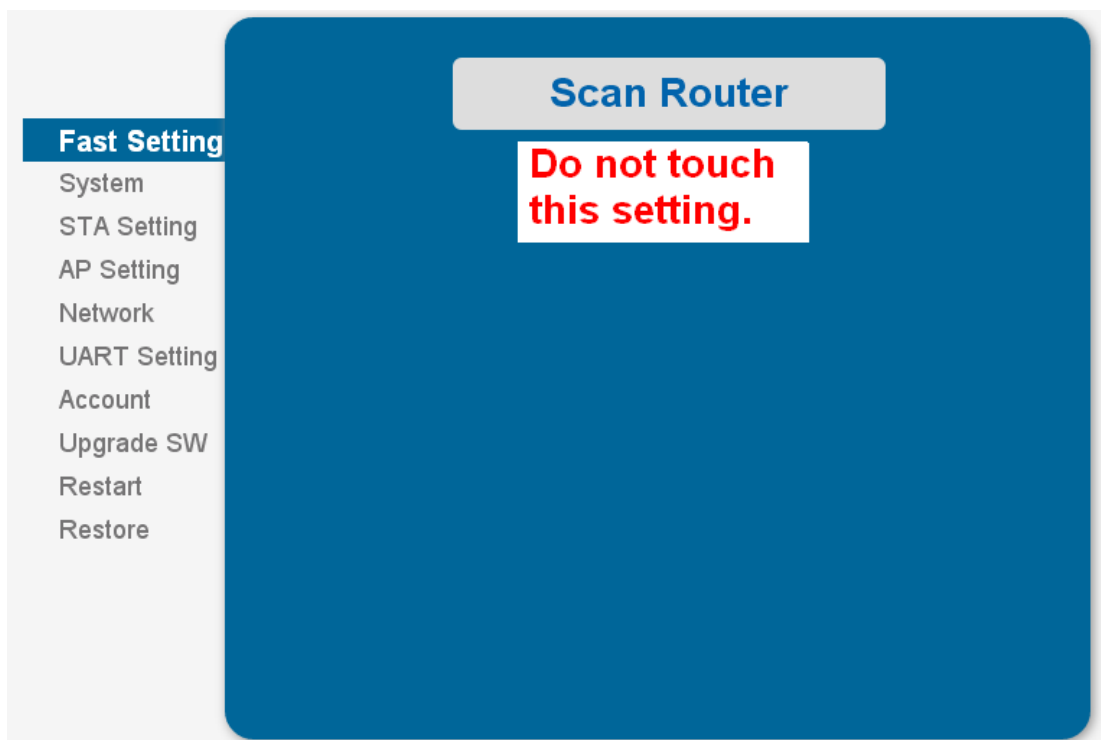
3, Open the browser and enter <http://10.10.100.254>

Use **admin/admin** to enter the wifi Adaptor setting web page.

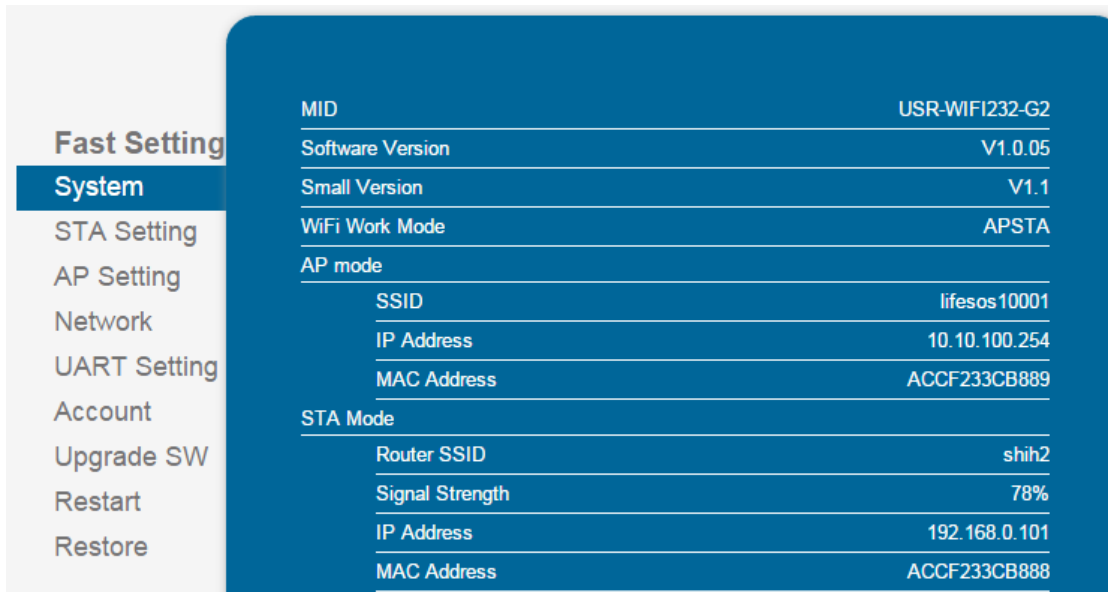


Note: If you change any setting below, only “Restart” the wifi Adaptor after all the changes of the setting had been saved.

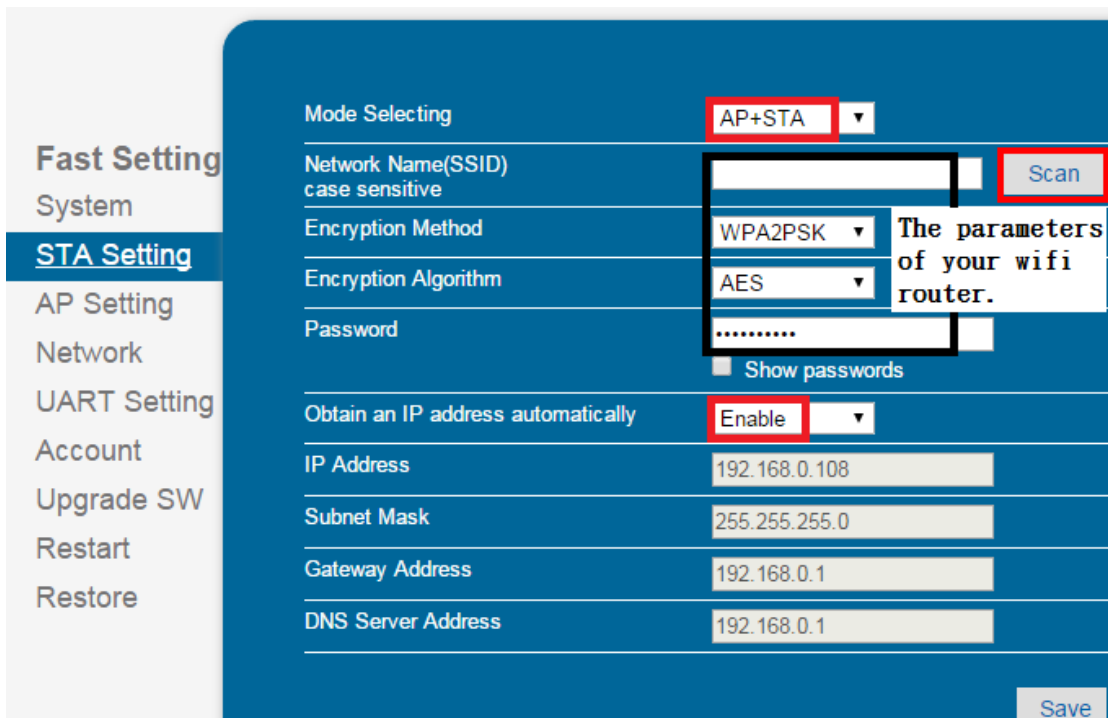
4, Skip this Setting.



5, Click “System” to show the settings in the wifi Adaptor.



6, Click “STA Setting”, it should be like the screenshot below, otherwise change the settings then click “Scan”.



Select your router and enter the parameters needed for the wifi Adaptor to connect to your router then click “Save”.

Fast Setting
System
STA Setting
AP Setting
Network
UART Setting
Account
Upgrade SW
Restart
Restore

Please select your current wireless network

Site Survey

SSID	BSSID	RSSI	Channel
hinet-1	C8:6C:87:28:11:C	0	1
ASUS	60:A4:4C:45:13:68	18	1
scientech2	34:8:4:CD:53:F0	84	6
lifesos10002	AC:CF:23:3C:AB:F5	70	6
Antaira	0:19:70:86:8C:F5	45	6
scientech2_2EX	74:DA:38:9:3D:CB	64	6
HP-Print-d3-Color LaserJet MFP	2C:33:7A:E:6F:D3	16	6
scientech	78:CD:8E:AB:8C:40	78	6
peitan	60:A4:4C:47:78:28	23	11
dlink1	0:26:5A:A8:36:70	40	11
GRAND	0:26:5A:A8:34:E8	30	11
sunbow	B8:55:10:B4:E2:A0	18	11
sunbow_n	B8:55:10:B4:E2:A1	23	11

Select your router and then click "OK"

OK Refresh

10.10.100.254

Serial to WIFI-produc... Status Living F

The page at 10.10.100.254 says:
The password is empty!

OK

Fast Setting
System
STA Setting
AP Setting
Network
UART Setting
Account
Upgrade SW
Restart
Restore

Mode Selecting AP+STA

Network Name(SSID) scientech2 Scan

Encryption Method WPA2PSK

Encryption Algorithm AES

Password Enter the password

Show passwords

Obtain an IP address automatically Enable

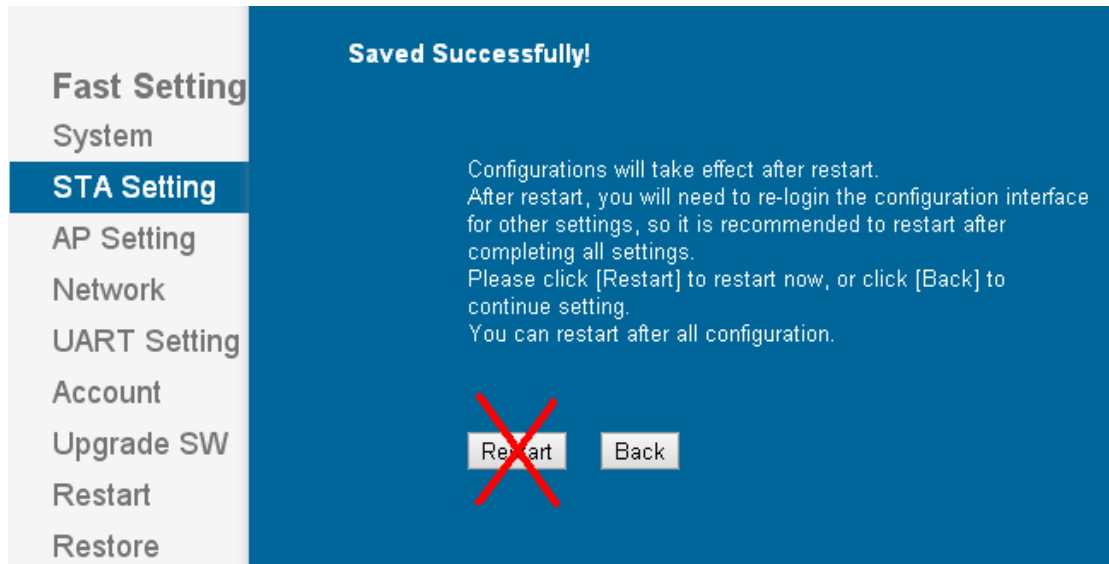
IP Address 192.168.2.101

Subnet Mask 255.255.255.0

Gateway Address 192.168.2.1

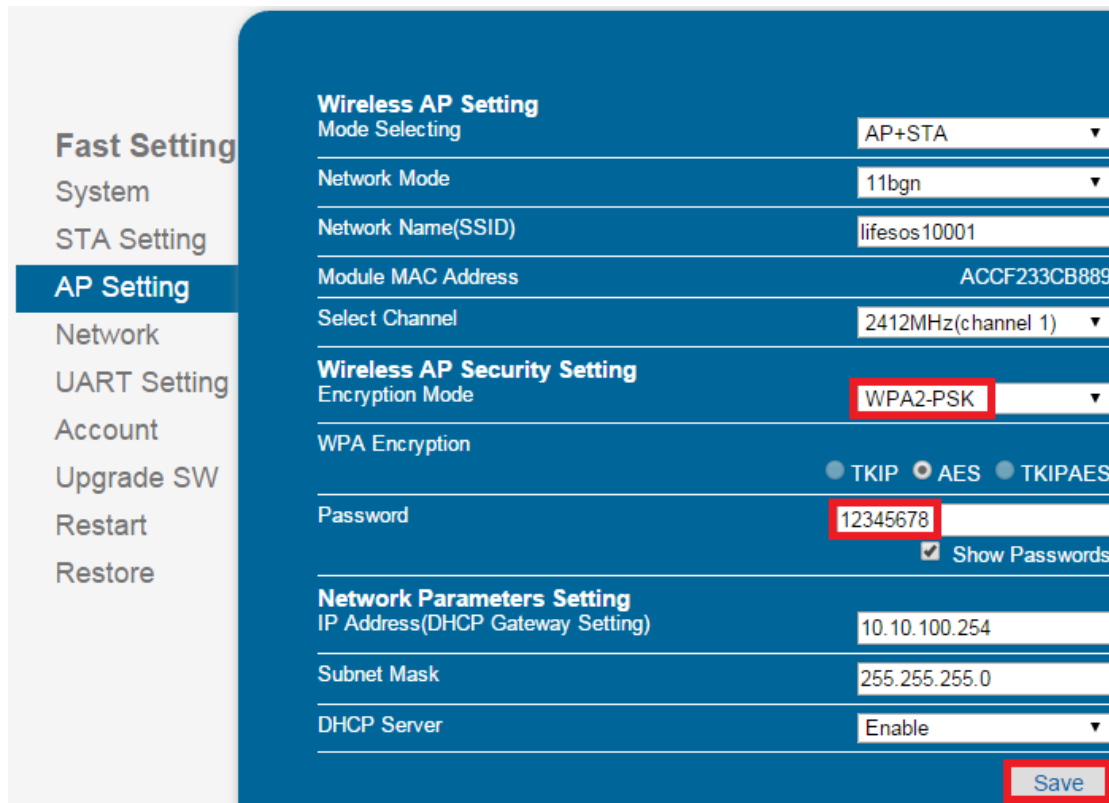
DNS Server Address 192.168.2.1

Save



Do not click “Restart”

7, Click “AP Setting”, it should be the same as the screenshot below, otherwise change the setting as below then click “Save”.



8, Click “Network”, select the protocol and set the Port ID number and Server Address as required then click “Save”.

Below example is for the linking to “i4Home” cloud services.

SOCKET_A Setting	
Protocol	TCP-Client
Port ID	1692
Server Address	Gateway.i4Home.net
TCP Time Out Setting	0

SOCKET_B Setting	
Enable/Disable	Disable
Protocol	TCP-Client
Port ID	
Server Address	
TCP Time Out Setting	300

TCP-Server: To work with HyperSecureLink software only port ID is needed.
TCP-Client: To link to i4Home Cloud server
both Port ID and Server Address are needed.

9, Click “UART” Setting, it should be the same as the screenshot below, otherwise change the setting as below then click “save” and then click “Restart”.

UART Setting	
Baud Rate	9600
Data Bit	8
Parity Bit	None
Stop Bit	1
CTSRTS	Disable

10, After successfully restart the wifi Adaptor don't forget to restore the wifi setting on your PC or tablet back to your router.

If you can't access the system from i4Home Cloud after changing any parameter, please wait for about 10 minutes for the server to locate the new connection socket from the system again.